

GETTING ON THE CSF NETWORK

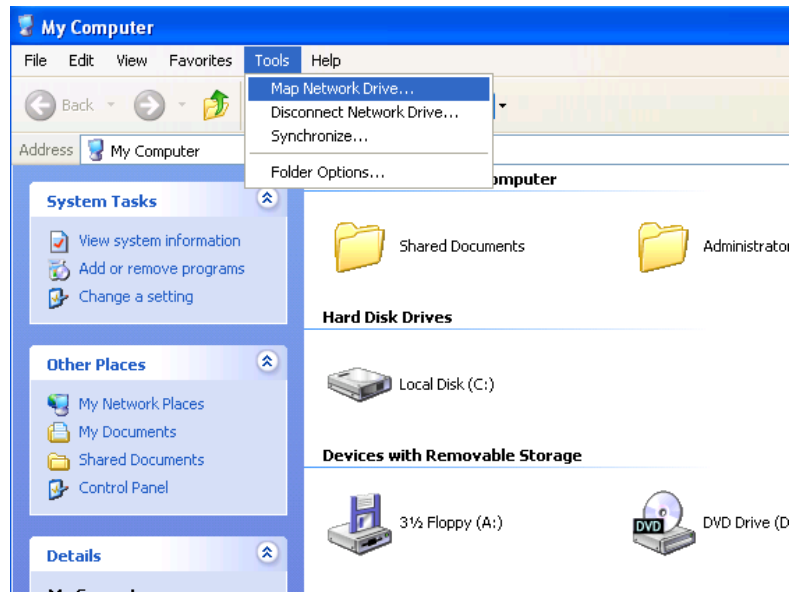
Windows XP Pro

The *T&D Network* houses a "Server" that provides shared disks for CSF. It can be accessed anywhere you have an internet connection. Here's how to connect:



1. From the "Start" bar, choose "My Computer"

2. From the "Tools" menu, choose "Map Network Drive"



3. Mapping the drive allows you to assign it a drive letter so that it will appear as an available drive under "My Computer".



4. Choose a drive letter in "Drive"

5. Under folder type:

\\128.138.91.229\csfdisk

for the CSF Disk

\\128.138.91.229\csffy09journals

for the 2009 Spreadsheets

6. Hit "Finish"

7. Use your provided Server Login (from Steven) or for Virtual Callboard use user: "callboard" and password: "csfuser"

8. Your chosen CSF disk will appear in your "Network Drives" window in My Computer

Connecting from Off-Campus:

Follow these instructions along with "VPN" instructions on CSF Computing page.

