

GETTING ON THE CSF NETWORK

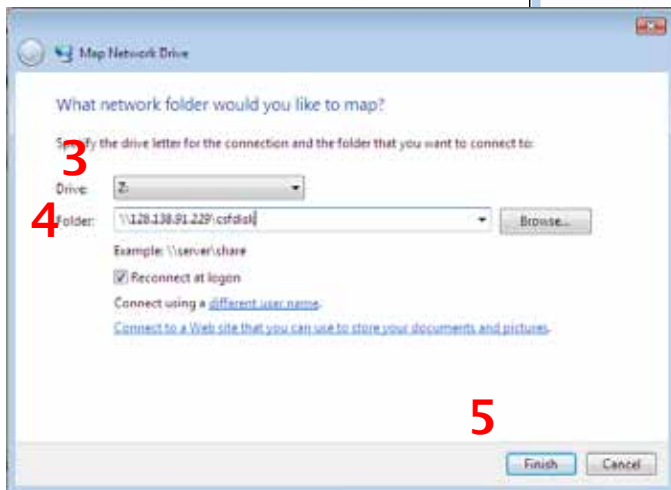
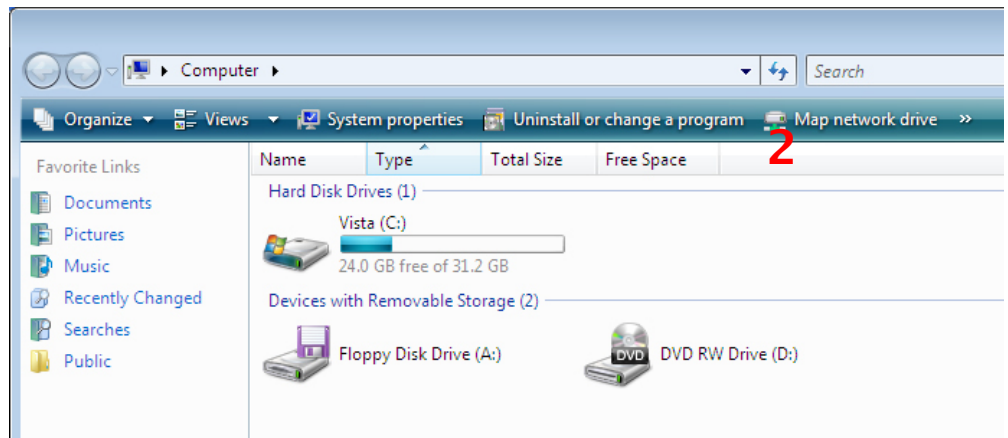
Vista (Business)

The T&D Network houses a “Server” that provides shared disks for CSF. It can be accessed anywhere you have an internet connection. Here’s how to connect:



1. From the “Start” button, choose “Computer” from the list on the right

2. In the “Organize” bar at the top of the window, choose “Map Network Drive”



3. Choose a drive letter in “Drive”

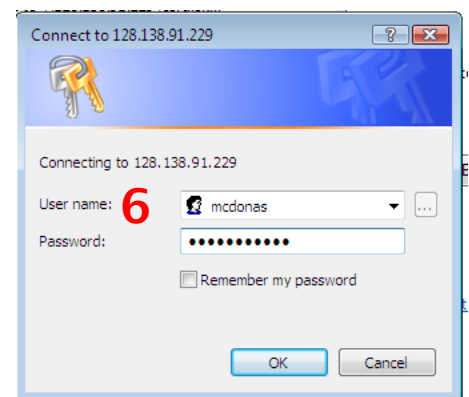
4. Under folder type:

\\128.138.91.229\csfdisk for the CSF Disk

\\128.138.91.229\csffy09;journals for the

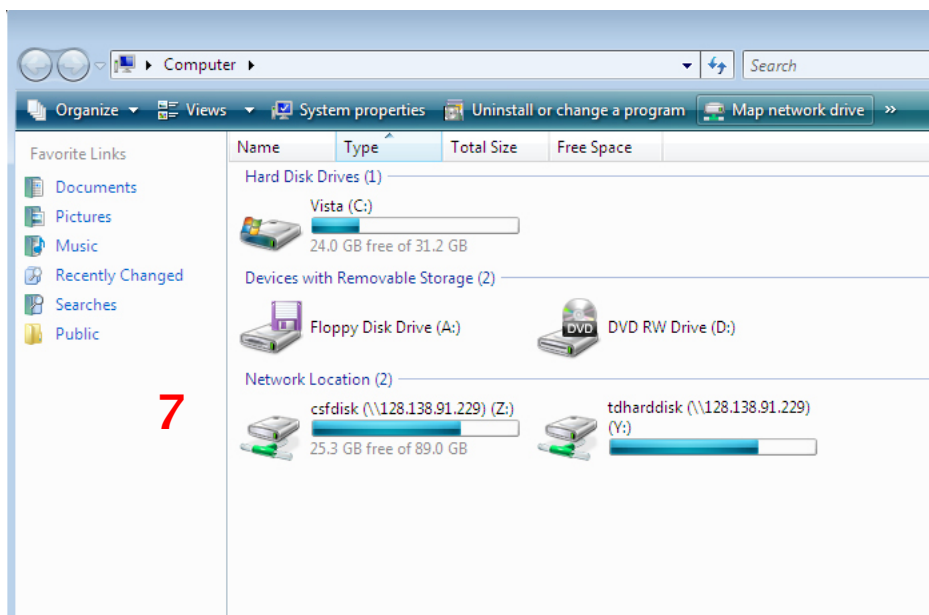
2009 Journal Spreadsheets

5. Hit “Finish”



6. Use your provided server password- this one comes from Steven, and is different from your identiky!

7. Your chosen CSF disk will appear in your “Network Locations” window in the “Computer” window.



Connecting from Off-Campus:

Follow these instructions along with “VPN” instructions on CSF Computing page.